

The background is a soft-focus photograph of a contemporary office space. In the foreground, a silver laptop sits on a light-colored wooden desk, its screen showing a web-based design tool with various colored blocks and lines. To the right of the laptop, a small potted plant with green leaves is visible. In the background, there's a white shelving unit with some items on it, and a desk lamp with a warm glow. The overall atmosphere is professional and creative.

# **Design Collaboration Healthician Application**

**Ebtihal Isleem**

# Onboarding Screens

## Comments

**22** “I would expect to be able to go to the next onboarding page by clicking on every part of the screen, not only on the dots. You might give the feeling the app is not working”.

**46** “Clicking here to get to the next page isn't fully intuitive, I'd consider either making the entire screen clickable”

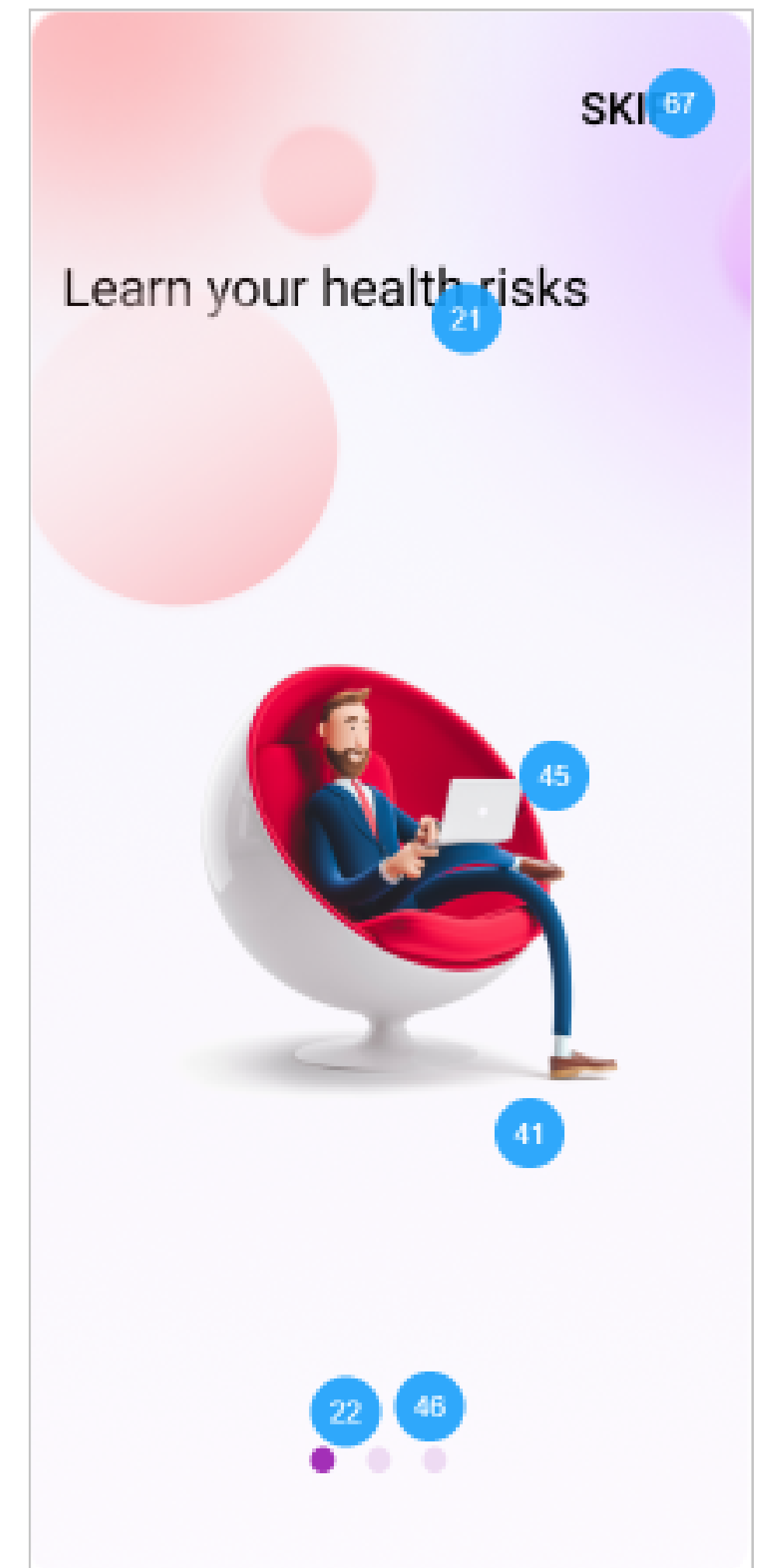
**67** “The "skip" feels a little too big with too much importance in the hierarchy of the page”

**45** “Awesome illustrations!”

**41** “LOVE the design of this!”

## Decisions and Rationale

- No changes will be done to the design
- I believe it is appropriate to have the “Skip” button prominent for users who decide to skip the onboarding experience. The font size used is 25px in medium
- Increase the tap area needed to navigate the screens. This is essential to accommodate those who prefer to tap the screen due to health problems as Rheumatoid Arthritis.



# Home Screen

## Comments

**69** “I feel like there could be more use of text hierarchy- I'm not sure what I should be looking at. I also feel like there could maybe be an image to make this homepage”

**42** “This card feels a bit unfinished and I'm not sure if it's something I'm supposed to click on which the text indicates”

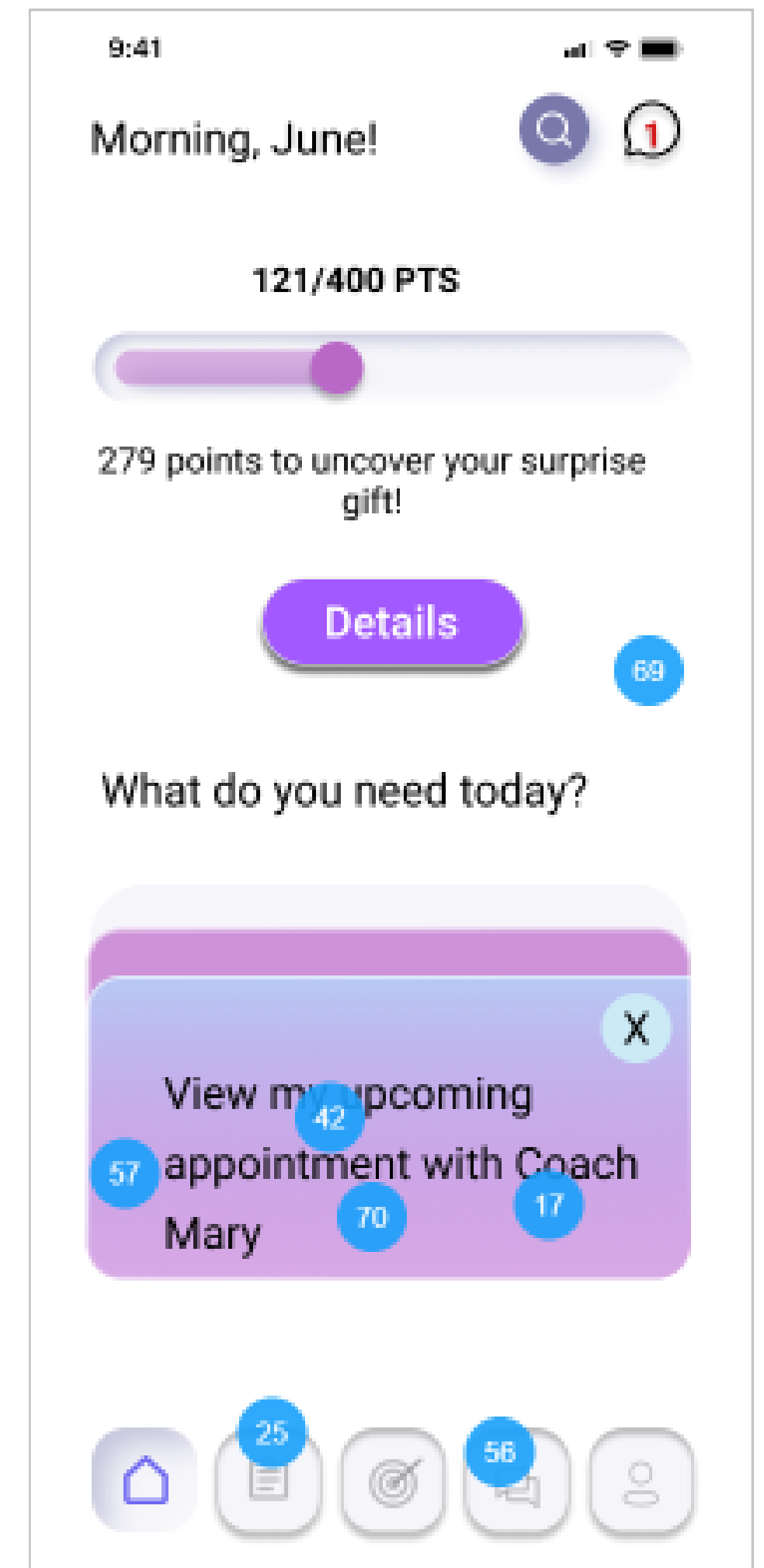
**57** “Are these cards with notifications for the user? I would prefer to see them stacked so I could leave my pending issues/tasks open and easily accessible”

**70** “Does this expand to reveal more cards?”

**17** “I'd suggest aligning text of these cards with equal margins on both ends and maybe decrease the font size a bit. Also, just an idea - maybe displaying them below”

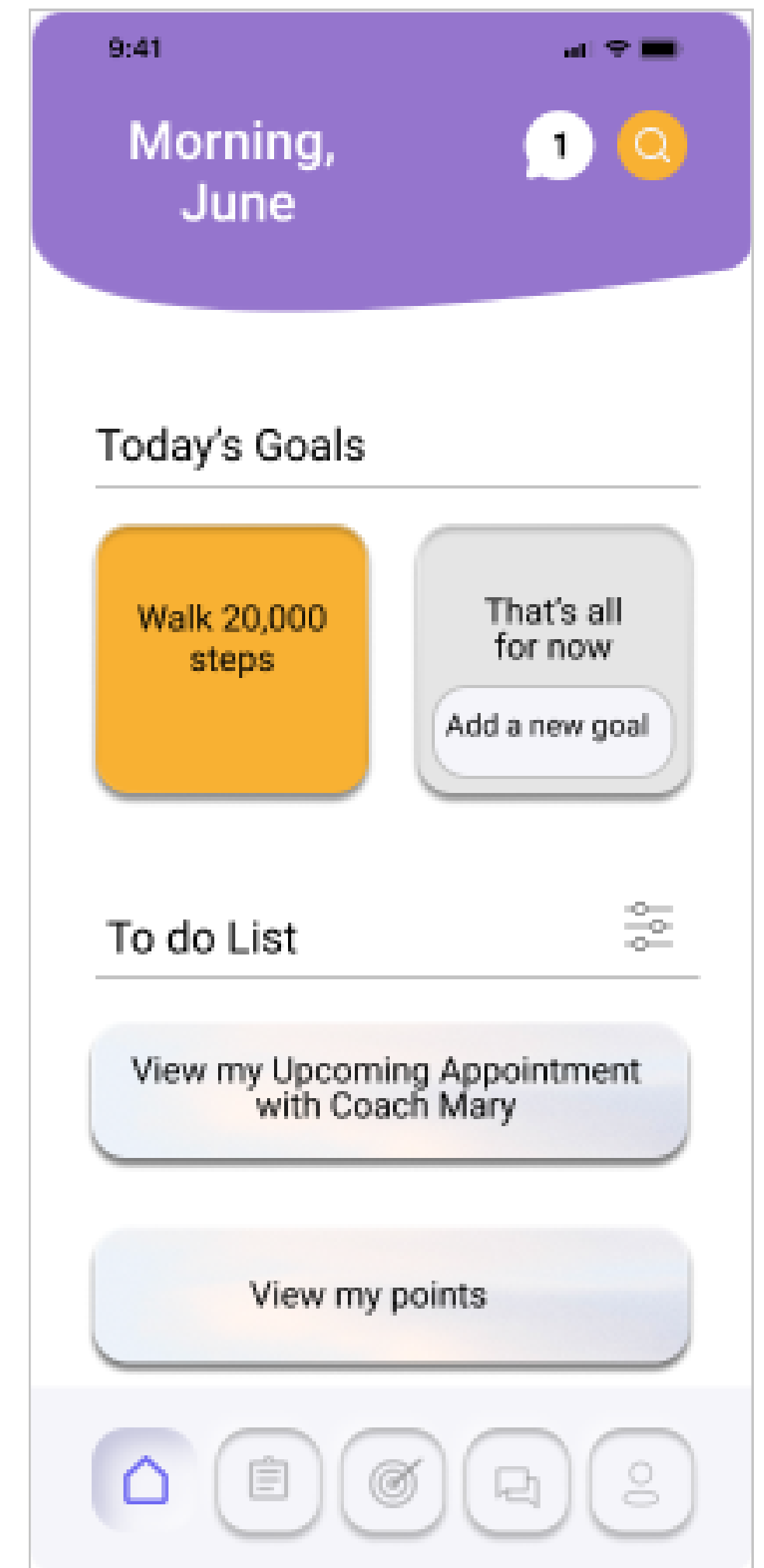
**25** “Navigation bar doesn't seem aligned when clicking through different screens”

**56** “Navigation bar throughout the whole app changes height base on which option I tap”



## Decision and Rationale

- Change the screen layout to reflect a hierarchy and create a focal point for users to consume the design, and guide them to the most important information
- The cards were confusing for the participants. Functions will be displayed in a different way to increase the accessibility and findability
- Ensure that the navigation tab is placed in the same coordinates across the screens



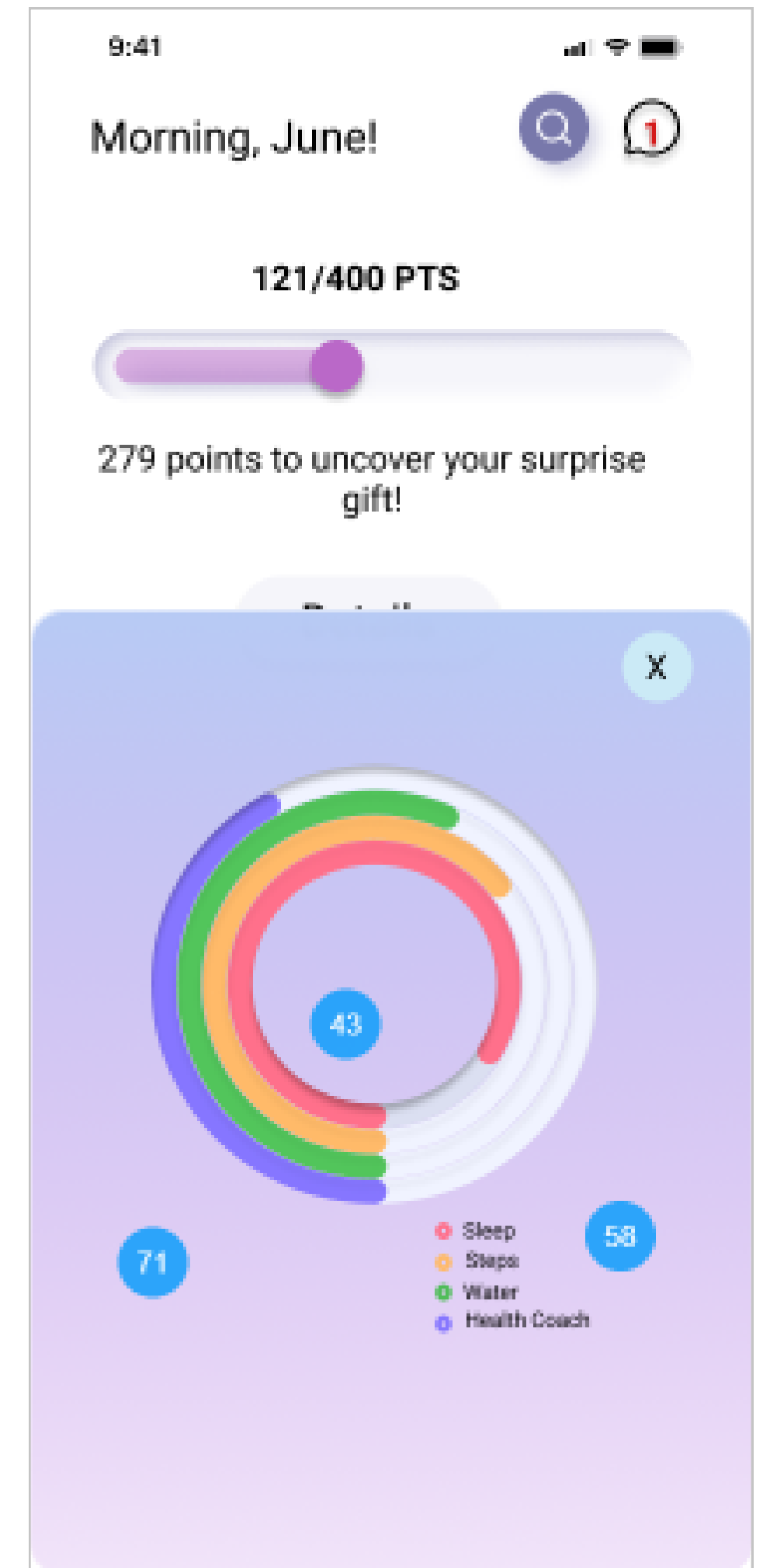
# Home Screen- Progress Chart

## Comments

**43** “I was not sure if the "details" button referred to these points. If they are not related to each other I would suggest a heading for this section to separate it from the information in "Details"”

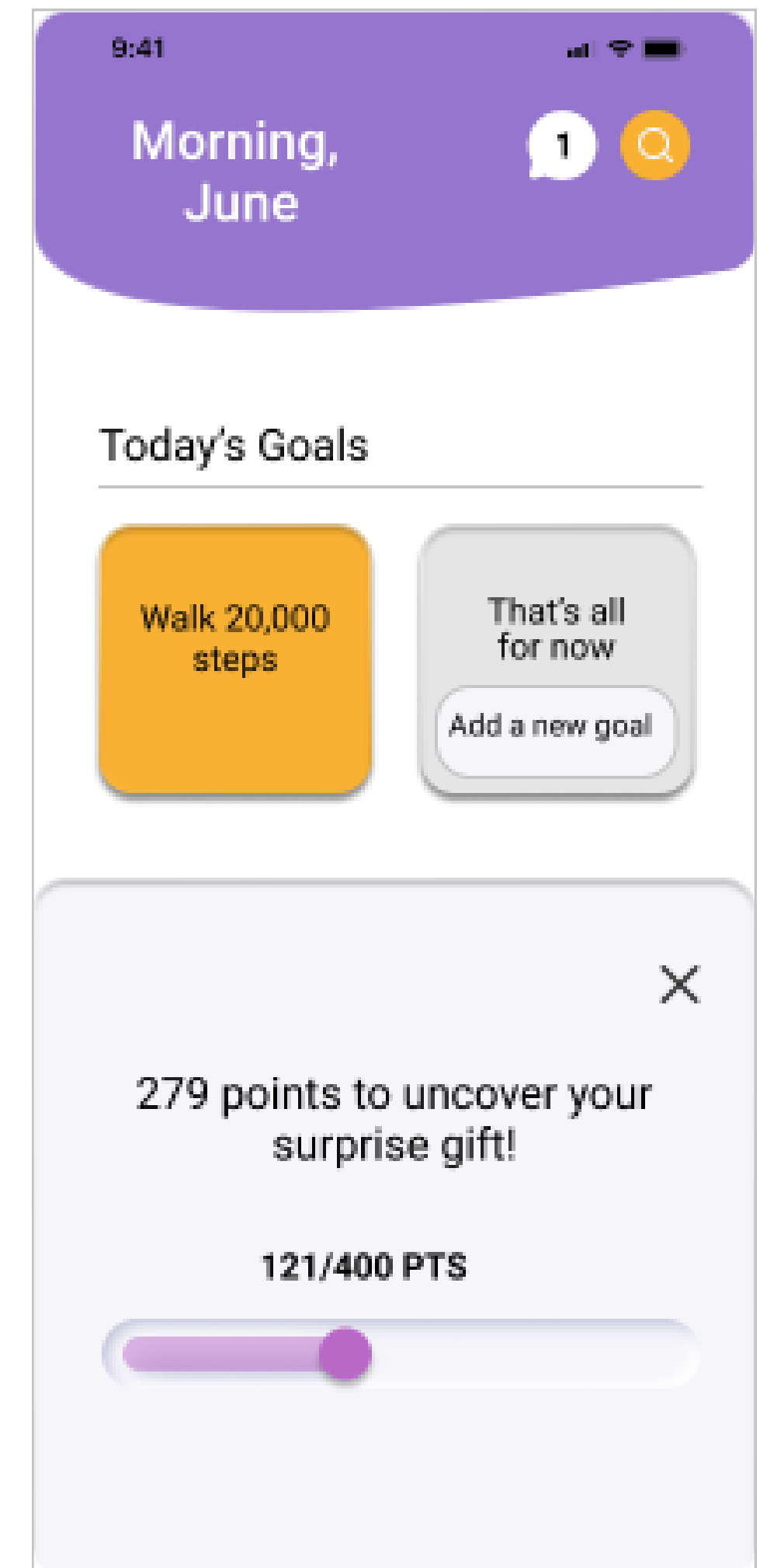
**71** “Not sure how this function works. It opens a pop up with activity?! I would add some labels, and increase the text. As well I would rethink the Home Page. At the moment it does not look very motivating or inviting”

**58** “The text is not centered within the bubble. Also as you are using a beautiful gradient color, I would remove the background in the X”



## Decision and Rationale

- After changing the layout of the home screen, the progress chart was added as a new window.



# Log In Screen

## Comments

**1** “hmm this is confusing as I am 'new here”

**2** “might be more intuitive to have these at the bottom near the sign in/up button”

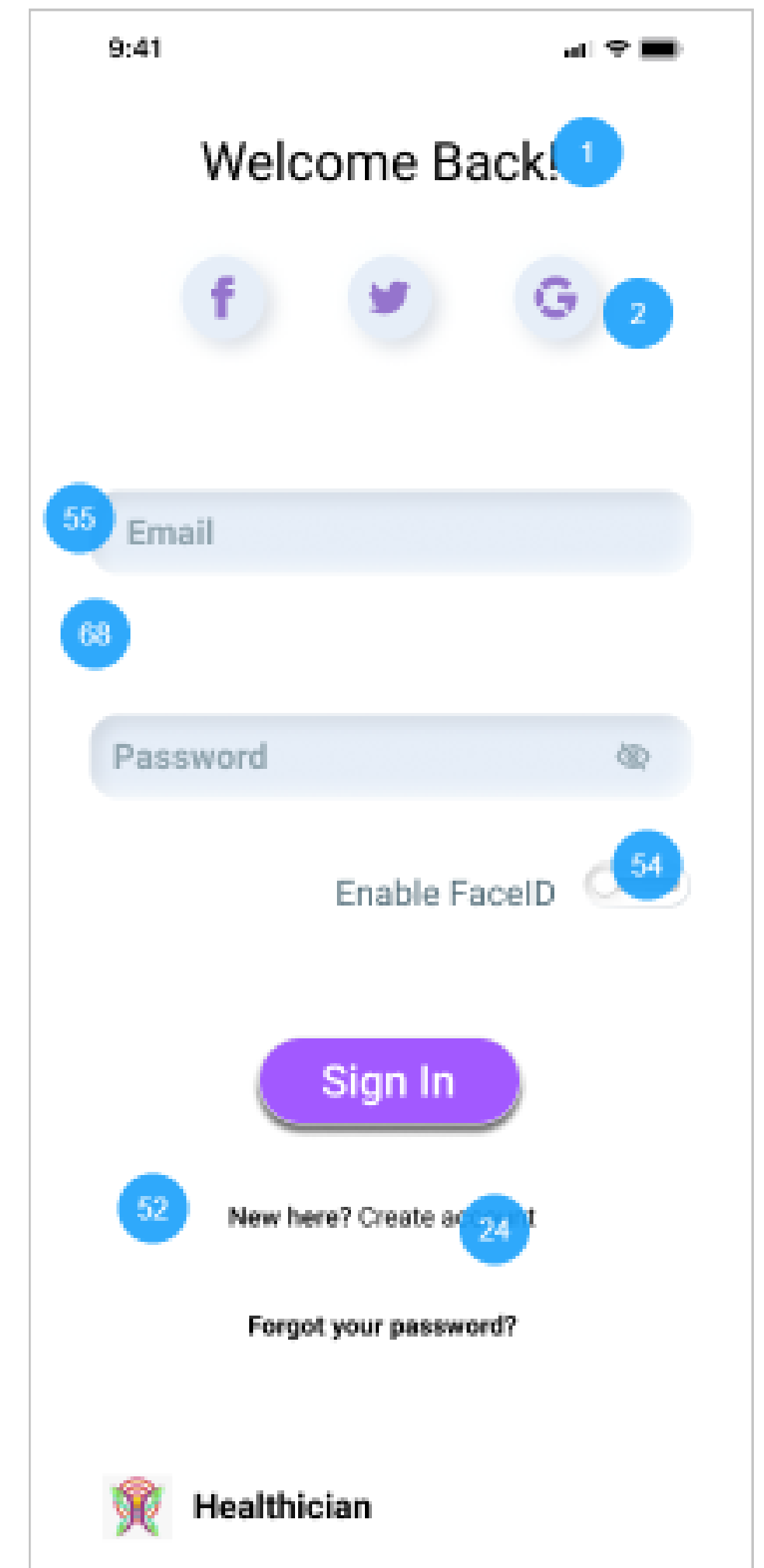
**55** “Space in between those two input fields seems a bit large, consider having them closer together”

**68** “The space between these two inputs feels a little large”

**54** “I'd maybe considering decreasing the size of this slider :)”

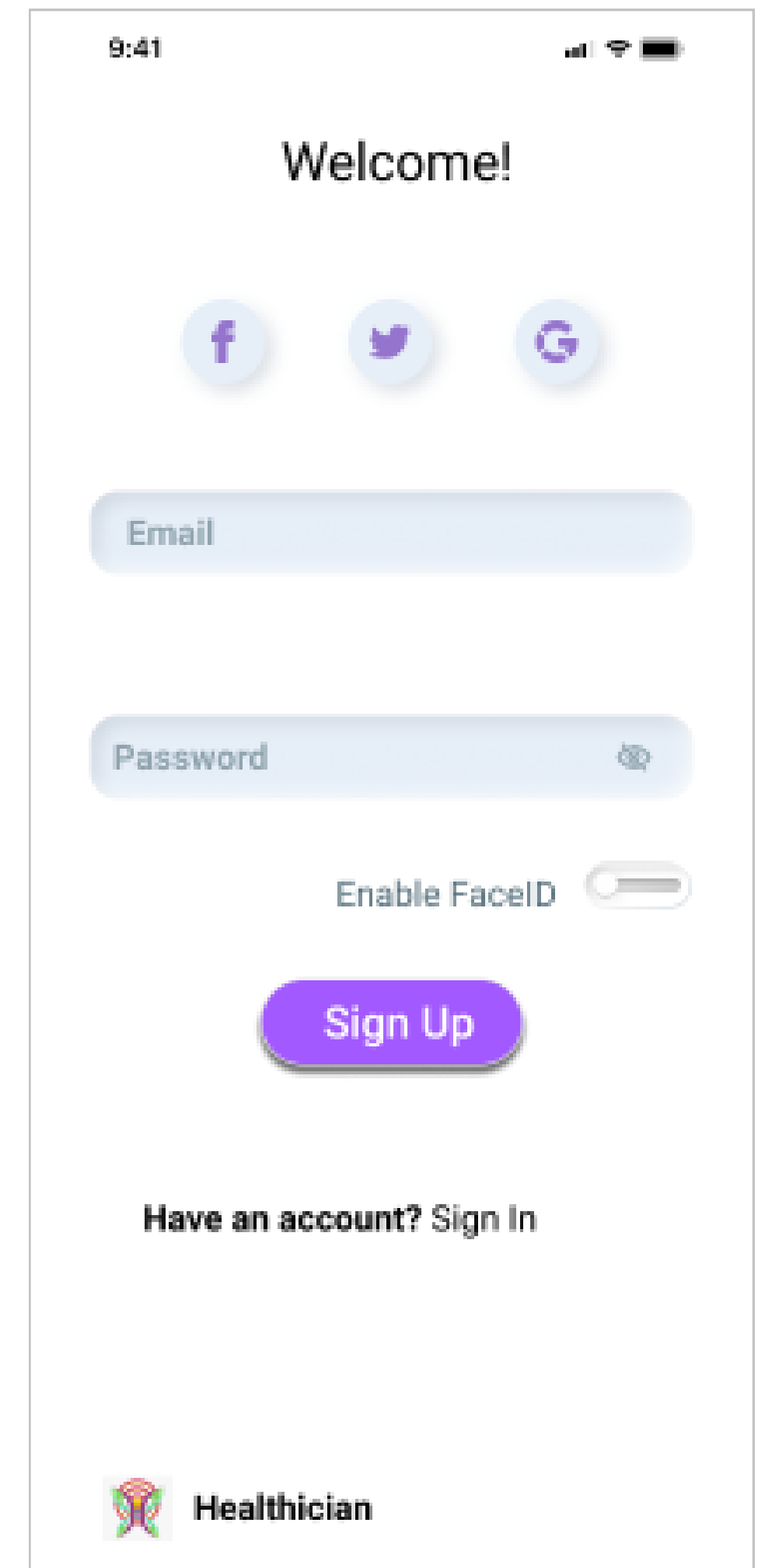
**52** “the "New here" section in my opinion should be a bit bigger. Don't discriminate new users! ;)”

**24** “If these are links I would highlight them somehow”



## Decision and Rationale

- A sign up screen was added, so new users can create an account after navigating the onboarding screens.
- Two of the participants indicated that the space between the text fields to be larger than it's should be. According to Human Interface Guidelines, If the layout includes multiple text fields, then enough space should be left between them so users can easily see which input field belongs with each introductory label. I couldn't find the amount of spacing needed between text fields, so I'll leave it as is for now. Same thing applies to the switch.
- Larger font will be used for the text below the sign up/sign in button. The font size will be increased from 15px to 20 px
- I'll keep the social sign-in buttons at the top. Users can easily use the buttons if they choose to sign up/sign in using social media platforms. In addition this will maintain the simple and clean layout of the screen.





# Assessment Screen-1

## Comments

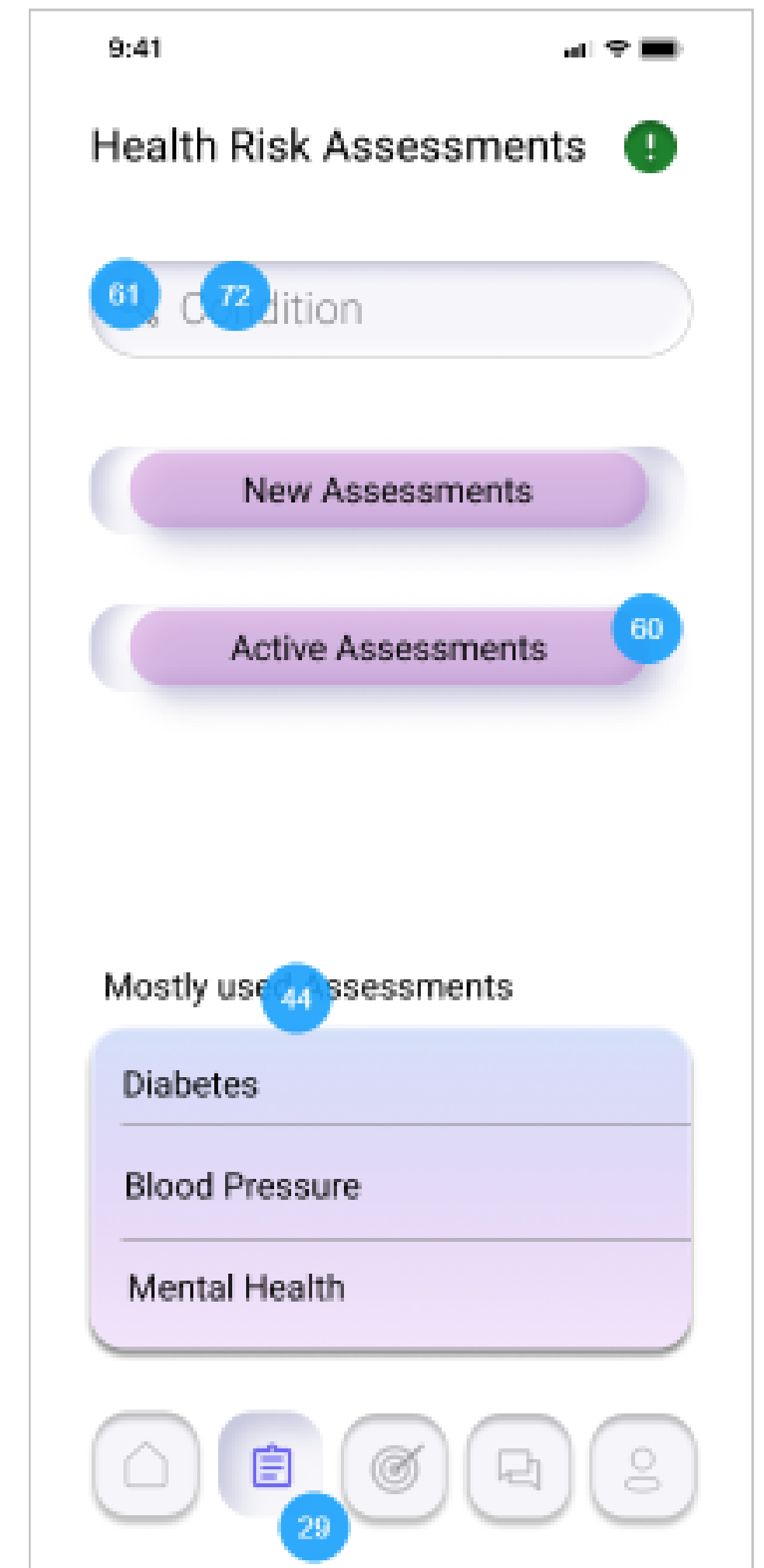
**61** “The icon here should be aligned to the center of the button :)”

**72** “The search icon needs to aligned more centre, and perhaps use text to users "Search for a condition" so they are being directed towards an action”

**60** “I'd stretch the width of those filled buttons and also increase the height of it to match the search bar. Now there seems to be another rectangle behind them?”

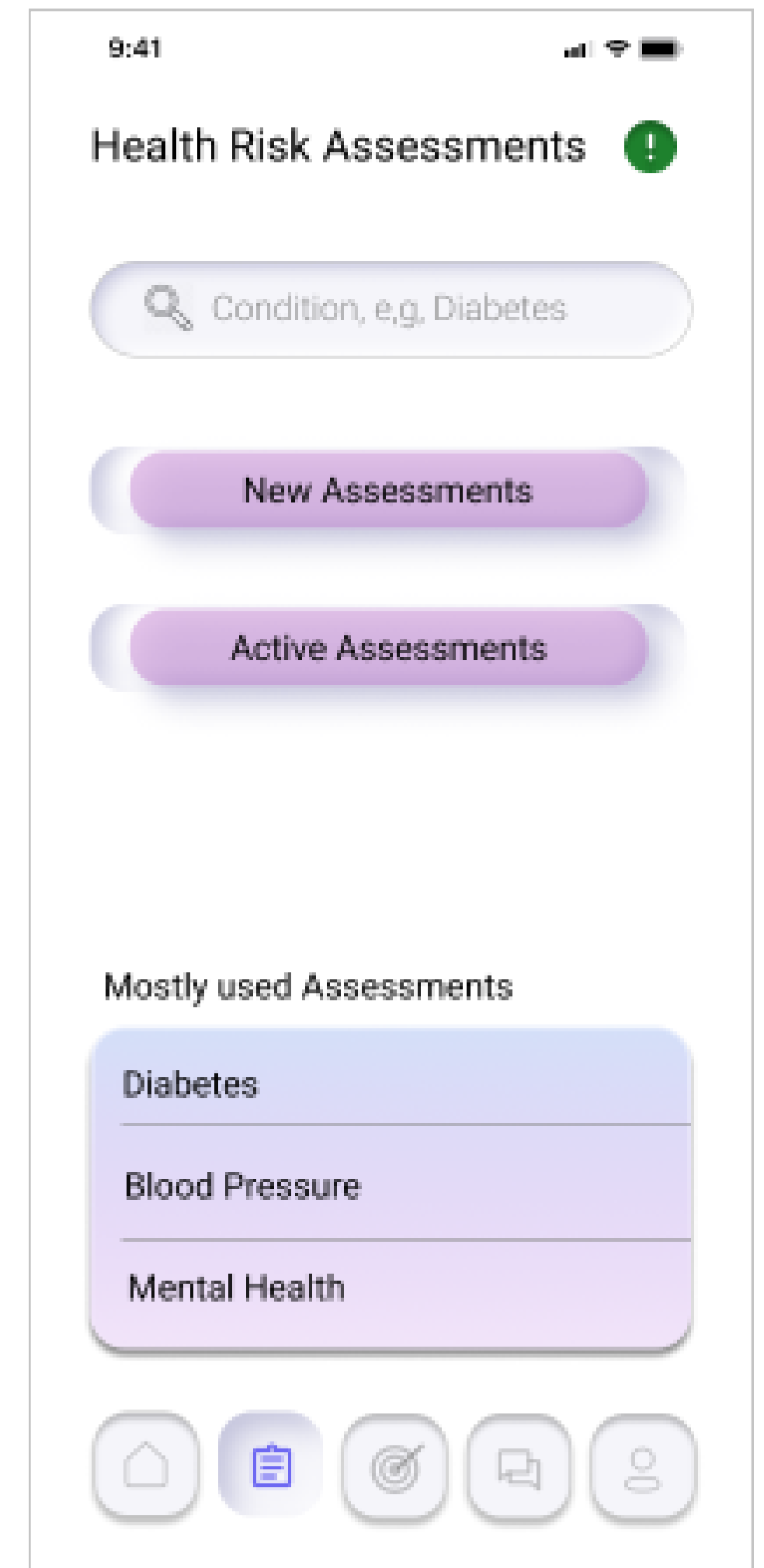
**44** “Is this mostly used across all users?”

**29** “I didn't know what is behind those icons therefore I had to click through the entire app to figure it out. Descriptions would help to get a grasp :)”



## Decision and Rationale

- The search icon and the placeholder are placed halfway inside the search field
- An example is added to the placeholder to guide users while using the search field.
- According to the Human Interface Guidelines, if multiple text fields are used then they should have the same size. None of the guidelines calls for equal size for the text fields and the buttons. If the buttons size is changed in this screen, then I need to change the size of the buttons across all the app screens and this would eventually interfere with the white space of some the screens
- I tried to label the navigation icons, but the text and the icons were competing over the space. So I used common icons to help new users navigate the app. I believe recurrent users won't have a problem understanding the meaning of the icons. So I'll leave the bottom navigation bar as is.



# Goal Screen

## Comments

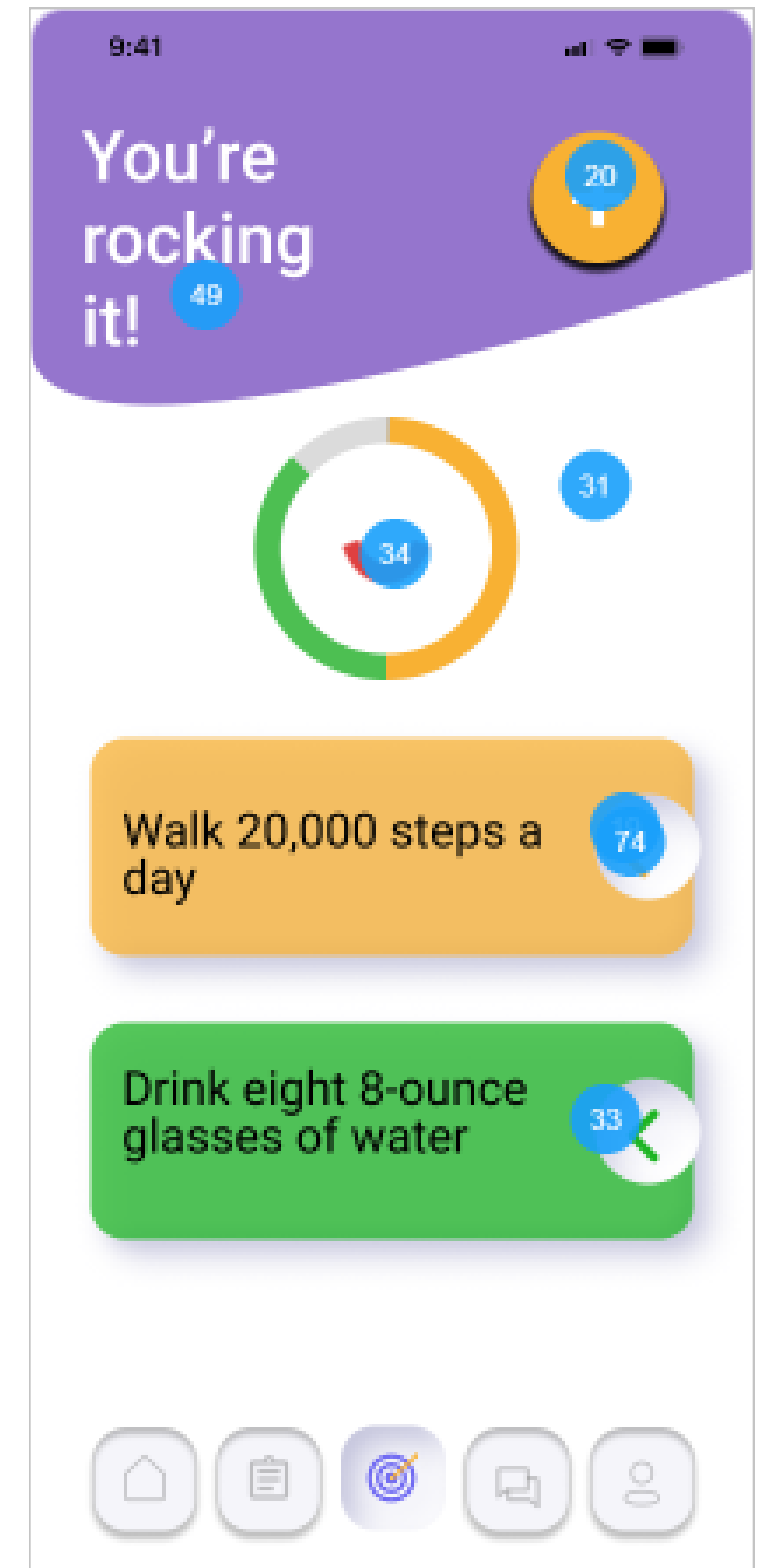
**20** “I overlooked this button. I didn't know there was an option to add an additional goal until I visited this screen for the 3rd time. Is it possible to add text? Or move the button?”

**49** “Perhaps consider making this your home page. It's very appealing visually”

**31** “I Would make this your home page. It looks more welcoming and gives a better understanding how what the app is for and about”

**34** “not sure what this red half eclipse means. Also I would round the edges of the meters in the main eclipse to align with the overall design”

**33** “I feel like these arrows should face the other way- it feels a bit confusing that they are facing left as opposed to right”



## Decision and Rationale

- It looks like the circular progress bar is a little vague. I'll add more context into it to make it easier to understand.
- I think the "Add" icon is a common icon and recurrent users will get familiar with it. I believe adding a text next to the icon not only unnecessary, but will take a white space that is needed to reflect minimalism and luxury.
- The arrow used with card is to direct users that they can swipe the cards to the left to further explore the goal. It's an interactive element that meant to make the experience more enjoyable. I'll leave as is.

